

INSTALLATION AND MAINTENANCE MANUAL

1)

Take out the Luminaire from packing box.
Remove Luminaire from Bubble Sheet.



2)

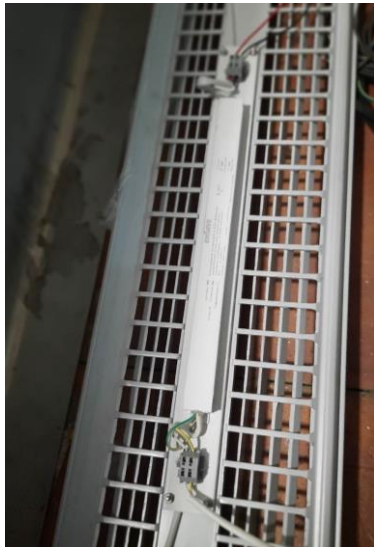
Insert Luminaire in Diffuser Grill Extrusion Cut out.

Fixed Luminaire with Extrusion with the help of
M4X20mm Screws & M4 Hex. Nut.



3)

Fix Driver gear tray to the extrusion and make the
Input-Output Terminal connections.



4)

Fix the male-female connector to the extrusion
using screws.



Recess Mounting Luminaire

Cat . Ref. Saloon Light- Direct/Indirect
(1960mm/1710mm/1440mm/1213mm/1150mm)

ENSAVE DEVICES PVT.LTD.

DATE:-16/02/2022

RVE:-00

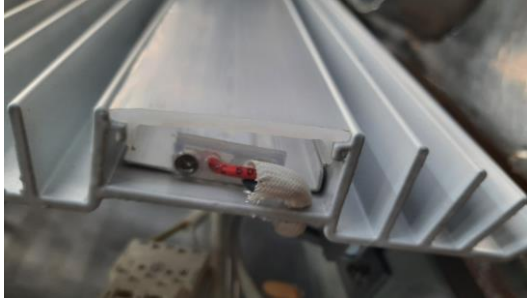
ENSAVE

Evergreen Engineering Co. Pvt. Ltd.
Plot No. 3, Seth Atmaram Shah Road, Range Office,
Behind Johnson Motors, Village Gokhivare, Vasai, (East),
Vasai, Palghar, MAHARASHTRA, 401208

INSTALLATION INSTRUCTION

5)

Secure the Click-fit Opal Diffuser on the locking area of diffuser grill extrusion.



6)

Install the extrusion on the coach ceiling.



NOTE:- Ensure Earthing is done properly after connecting L & N Wires on to the connector

Recess Mounting Luminaire

**Cat . Ref. Saloon Light- Direct/Indirect
(1960mm/1710mm/1440mm/1213mm/1150mm)**

ENSAVE DEVICES PVT.LTD.

DATE:-16/02/2022

RVE:-00

MAINTENANCE SHEET

SALOON LIGHT- Direct/Indirect (1960mm/1710mm/1440mm/1213mm/1150mm)

Periodic Maintenance	Break Down Maintenance
<p>The front visor diffuser should be cleaned.</p> <p>The cleaning interval may vary from 2 to 3 months based on the condition of the diffuser, determining of which should be done during visual checks.</p>	<p>The Led array should be replaced if it is found burnt or fused or open circuit.</p> <p>During breakdown maintenance, End caps provided at the end sides of the luminaire housing shall be checked and the property refitted, If not to prevent dust and water ingress.</p>

SR. NO	Fault	Problem Cause	Remedial Action
1	LED array does not glow or strike.	a) Improper LED array fitment and soldering of it to the input point b) LED array unit is defective. c) Loose wiring at led terminal and at driver unit output terminal. Driver unit is malfunctioning.	a) Ensure correct terminal soldering and the fitment with LED array. b) Replace defective unit with working one. c) Replace loosened contacts at LED array and driver output terminal. Replace defective driver unit with working driver.
2	Driver unit is not working	a) Loosed wire contacts at driver output and the input terminal. b) Driver unit defective. c) Improper LED array insertion into MCPCB board to no load condition.	a) Ensure positive wire contacts at driver and also input terminal. b) Replace defective unit with good and working one. c) Ensure LED array insertion and positive tightness of the screw.
3	Low Lux Level	a) LED array is at the end of its life. b) Dust accumulation on front diffuser.	a) Ensure aged LEDs over 50,000 burning hours need to be replaced. b) Periodic frequency to clean the diffuser surface externally.
4	Dust / insect / water ingress into the luminaire housing.	a) Removal of end caps provided at the end sides of the luminaire housing.	a) Ensure end caps are repositioned after breakdown maintenance at the end sides of the luminaire housing.

Recess Mounting Luminaire Cat . Ref. Saloon Light- Direct/Indirect (1960mm/1710mm/1440mm/1213mm/1150mm)	ENSAVE DEVICES PVT.LTD.	
	DATE:-16/02/2022	RVE:-00